

Herefordshire Funders Network



**Welcome to
Meet the
Funders**

**Will Lindesay DL
Chief Executive**

AGENDA

10:05 Welcome, housekeeping and introductions - Will Lindesay

10:15 Tim Dutton and Karen Frost - The Clive Richards Foundation

10:45 The Hallmarks of an Effective Funding application - Bridie Sullivan (Herefordshire Community Foundation) and Claire Bowry (The Eveson Charitable Trust)

11:15 Plenary and information share

11:30 Networking and 1:1's with funders (lunch available from 12:30)

13:30 Close



The Clive Richards Foundation is committed to supporting charitable causes where its financial support will '**make a difference**'.

Tim Dutton – CRF Administrator and Stage 2 Assessor

Team

Karen Frost – CRF Trustee

CLIVE RICHARDS FOUNDATION



We are in our 40th Year of grant making and will shortly be announcing the 20 local recipients of a Grant of £2,000 to use as they please.

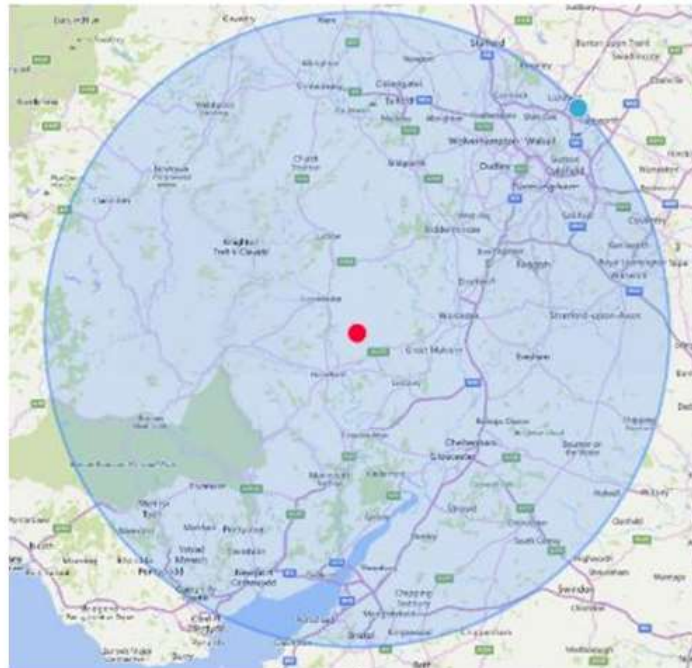
Today we wanted to talk to you about what types of projects our Trustees look to support and those where we are not so keen.

The Trustees look for Longevity and Legacy in a project – by this they want to support projects which will stand the test of time and make a difference to the local community.

Our preference would always be to support Capital projects over running costs and salaries.

Make a Difference – with a local focus:

- Mainly Capital Projects
- Match-funded by other funders
- Building long-term relationships with projects.



Make a Difference - Areas of Focus:

- Medical, Health and Welfare
- Communities
- Education and Bursaries
- Art & Heritage
- Overseas



The Stages of a Grant Application Managed by our Administration Team of Tim and Caren

Stage One - 2 Trustees (SAR and PH) meet every 4- 6 weeks to assess all applications received in the period. Usually, 25-30 applications assessed. Can be approved up to £5k, passed to Stage 2 (over £5K) or declined.

Stage Two - completed by TD. Additional information requested from applicant and then a visit arranged to discuss request in more detail. TD will prepare a full assessment of the application which will be provided to the Trustees ahead of the next Board meeting.

Nine Trustees – all volunteers from a variety of different backgrounds, who meet 6 times a year to make decisions and report on progress by:

- Considering Stage Two grants based on extensive information from the Admin Team.
- Receive presentations from projects asking for grants over £70,000.
- Build relationships with key people and projects we are supporting.



Local Charities which have received grants in the last 12 months



The Courtyard Theatre – Hereford

Completion of £50k grant towards the costs of £356k project to replace the lighting system to a 'state of the art' LED lighting installation to reduce costs for the Main House, Studio and Nell Gwynne Studio.



Other Arts Support

- Sponsorship of local **Choirs**
- **Army Benevolent Fund** Christmas Concert
- **Quench Arts**



We extend our sincere thanks to The Clive Richards trustees and administration team for your generous support of this transformative project which will deliver a long-lasting legacy for our charity.

On-going local support for **Bromyard** – Two Key Projects.

Three Counties Academy Trust - £100k to new artificial sports pitch. Our local High School supported with benefit to the local community and Bromyard football club providing winter training facilities.



Bromyard Rugby Club. £8750 towards a new tractor for pitch mowing.

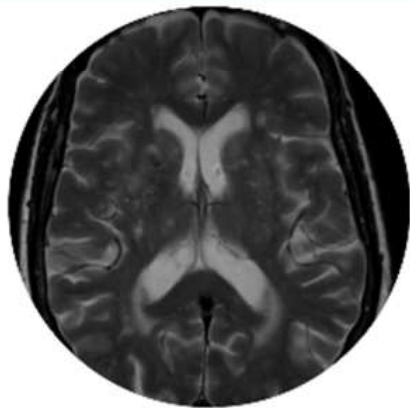


Two local charities CRF continues to support

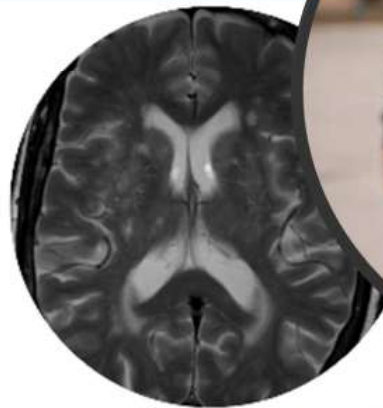
Cobalt UK Cheltenham - £85K towards AI software to reduce waiting times and produce better imagery.

We are Farming Minds - £15,000 funding to allow them to upgrade their IT systems to cope with increased demands on their services.

BRAIN SCAN FOR DEMENTIA



Brain scanned for dementia research in Cobalt's 3T MRI
with no AI



Brain scanned for dementia research in Cobalt's 3T MRI
with AI

The images of the brain are identical, but for this particular sequence for the whole brain took the actual procedure took **only 54 seconds with AI versus 2 min 15 sec without AI**. Dementia patients find it much easier to tolerate.



CRF supporting Wheelchair Rugby – Sponsorship of two of only 18 National Wheelchair Rugby teams in the UK.



*To continue with our fantastic work, you can support **Ospreys Wheelchair Rugby** by helping us with the necessary funding needed for specialised sports wheelchairs, team kits, and also the training needed for league games and tournaments in the UK.*

Cheltenham Tigers – funded the cost of two specialist rugby wheelchairs.



Education Bursaries – we support five young people each year from local 6th form colleges with a £3k per year Bursary towards the cost of their University/College course.

Misty Hughes Gardiner – Exeter University – Law - Year 2.

I also believe that I have learnt an extraordinary amount during my second year. I really enjoyed all the modules - Tort, Land, Equity and trusts, EU and Mediation and Dispute Resolution.

Lachlan Higgins – Royal Welsh College of Music and Drama – MA Advanced Opera Performance Year 2

We are again so grateful for your support through the Clive Richards Foundation this past year. Your scholar, Lachlan, has had a hugely successful year packed with performances and learning opportunities both in College and on his own initiative, and has clearly benefitted from his training as he begins to embark on his professional singing career. Without your support, Lachlan would not have been able to afford his place at College. Thank you so, so much.

Anna Kelly – University of York – English Literature. Year 2

In my second year at university I have gained a lot of confidence in my writing skills, public speaking, and working in teams.

George Glover – University of Liverpool – BA International Relations.

I would like to thank the Clive Richard's Foundation for giving me the financial opportunity to achieve my undergraduate degree. The support from this foundation is greatly appreciated and I thank all of the volunteers and staff who make the organisation possible.

Overseas – we support overseas charities to the sum of around £50k per year – this typically supports between 15 and 20 different Charities on a variety of projects from the building of classrooms, purchasing desks and provision of water by creating boreholes or water storage. We make a massive difference to a lot of people for relatively small grants.



More Donation pictures



Grants and Bursaries – the impact of the Clive Richards Foundation

In the financial year to March 2026 total grants and Bursaries = **£1.364m**

In the almost **40 years** since the Clive Richards Foundation was founded it has provided grants and bursaries to a total of **£18.163m** to the local community.



**Clive Richards
Foundation**
Making a Difference

The Hallmarks of a Good Application

Claire Bowry - CEO, The Eveson Trust

Bridie Sullivan - CEO, Herefordshire Community Foundation

hvooss Meet the Funder Conference
22 April 2026



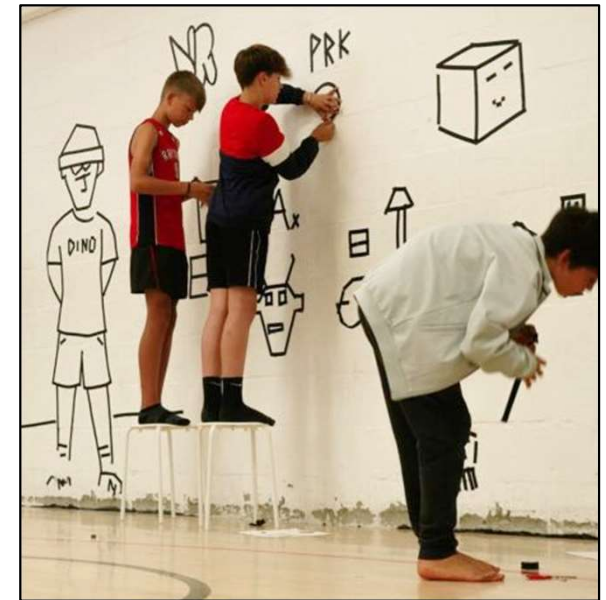
Before you start...

- Ensure your governing document is up-to-date
- Minimum of three trustees
 - Unrelated
 - Living at separate addresses
- Does the project come within your charity's objects and area of benefit?
- Check your Charity Commission register entry is correct (current trustees, address)
- Ensure your website and social media reflect accurate, up-to-date information



Key documents

- Governing document
- Annual report and accounts
- Safeguarding policy
- Equality, Inclusion & Diversity (or Equal Opportunities) policy
- Financial controls policy
 - Bank account in the organisation's name
 - At least two authorised signatories
 - Minimum 12 months of accounts
 - Financial forecast (where required)



Safeguarding

Your Safeguarding Policy must be fit for purpose

- Date of last review clearly stated
- Named safeguarding leads with contact details
- Clear reporting and escalation procedures
- Policy tailored to the nature of your work and beneficiaries



What Funders Expect to See

- Evidence of need
 - Examples: community consultation, beneficiary insights, partner feedback, local data, increased demand, referrals, waiting lists.
- Project budget
 - Clear, itemised breakdown
 - Evidence of costs (quotes, links, invoices)
- Project delivery plan
 - Timetable and schedule of activities
 - Your track record in this area of work



Calculating beneficiaries

Be precise about who benefits:

- Direct beneficiaries = people who will use or attend the project
- Indirect beneficiaries = friends, carers, family member



How to Communicate Your Project Clearly

- Explain exactly what the grant will fund and how it fits the funder's remit
- Cover the essentials: what, when, how often, where, and who benefits
- Describe how you will reach your target beneficiaries
- Set out the outcomes (e.g., improved wellbeing, increased confidence, new skills)
- Explain how you will assess impact and measure outcomes
- Confirm partner involvement before applying
- Describe the legacy: what happens after the funding ends
- Optional: include a short case study to illustrate impact of your work

Common Pitfalls to Avoid

- Avoid acronyms (even in email footers) - funders may not recognise them
- Ensure figures match across the application and budget
- Don't be vague: explain clearly how beneficiaries are in remit
- Use the funder's correct name
- Avoid repetition - assessors read the whole application. Simple and concise is easier to digest.
- Don't rely on AI to write your application. Funders look for authenticity and genuine local insight.



Why applications fail

- High unrestricted reserves or restricted funds that could cover the project
- Weak governance or inadequate safeguarding
- Charity not delivering the work directly
- Poorly written or unclear application
- Overdue monitoring from a previous grant
- Late submission - Project already started before funding decision. Funders generally don't fund retrospectively



Good Practice Once Funding Is Awarded

- Don't change expenditure without prior approval
- Keep invoices and receipts
- Inform the funder promptly about any issues
- Maintain accurate beneficiary statistics
- Capture photos, videos and testimonials where appropriate



Final Tips

- Read the funder's website carefully
- Contact the funder if unsure about eligibility
- Be clear, consistent, realistic and honest
- Don't be discouraged by rejection
- Understand your charity's accounts
- Respond promptly to funder communication
- Allow enough time to prepare and submit your application

